


# FISHWAY STATUS REPORT

Date: 3/21/2015  
 Inspection Period: 3/15 thru 3/21/2015

All JD Fishways are inspected twice per day during fish season, Mar. 1 - Nov. 30  
 Frequent monitoring of the PLC displays in SMF Fisheries Office as necessary.



**US Army Corps  
of Engineers**  
Portland District

## JOHN DAY DAM

JD/WC Project-Fisheries  
 P.O. Box 823  
 Rufus, Oregon 97050  
 Phone: 541-506-7860

John Day Dam	Inspections	Criteria	Total Number of Inspections: 14	Temperature: 45 F
	Out of Criteria	Limit		Secchi: 6.0 Ft.
<b>NORTH FISHWAY</b>			5 out of 6 AWS pumps available since 12/23/14	
Exit differential	0	≤ 0.5'		
Exit Control weirs	0	High setting	High setting is normal for JDN	
Count station differential	0	≤ 0.3'		
Weir crest depth (DS gauge)	0	1.0' ± 0.1'		
Entrance differential	0	1.0' - 2.0'	AVG 1.5	
<b>SOUTH FISHWAY</b>			3 AWS Turbines in regular service since 2/28/15	
Exit differential	0	≤ 0.5'		
Exit Control weirs	0	Mid setting	Mid setting is normal for JDS	
Count station differential	0	≤ 0.3'		
Weir crest depth (US gauge)	0	1.0' ± 0.1'		
South entrance differential	0	1.0' - 2.0'	AVG 1.5	
Entrance weir SE1	0	depth (≥ 8')	AVG 8.4	
Collection channel velocity	0	1.5 - 4 fps	AVG #REF!	
N. Entrance PH(Bay 19)differential	0	1.0' - 2.0'	AVG 1.6	
Entrance weir NE1	2	depth (≥ 8')	AVG 8.4	OOC on 3/15 at 7.8 and 7.7', adjusted immediately by Fisheries
Entrance weir NE2	0	depth (≥ 8')	AVG 8.5	
<b>JUVENILE PASSAGE</b>			RTS is scheduled for 3/23/2015	
Forebay/bypass conduit differential	N/A	4.0' - 5.0'	AVG 4.6	
Submersible traveling screens	N/A	visual inspect	STSS installation is scheduled for week of 3/23/15	
Turbine trashrack drawdown	N/A	<1.5', wkly		
Vert barrier screen drawdown	N/A	<1.5', wkly		
Spill volume	OOS		On seal since 11/30	
Spill pattern	N/A	per FPP	2015 Spill season is starting on 4/10 at 0001 hrs	
Turbine Unit Priority	0	per FPP		
Turbine 1% Efficiency	0	per FPP		

**SMOLT MONITORING FACILITY**

**Operations:** Functional RTS is on 3/24/15. Regular sampling mode starts on 3/31/15.

**Debris:** N/A

**Maintenance:** SMF winterized by 11/26. Annual PMs underway. One transport flume's joint sealed; no other major issues this year.

**Research:**

None

**Fallbacks:** AVG: #DIV/0! MAX: #DIV/0! MIN: #DIV/0!

**OTHER ISSUES:****JOHN DAY**

**BIRDS :** see the Avian Numbers tab. We report all species and locations, but in reality only gulls in the tailrace BRZ are relevant at JD.

JD Engineering preparing SOW for the re-installation contract of 2 lines, which is expected in March '15; funding by special CRFM \$.

**Operations:**

JBS OOS since 12/20/14. RTS is on 3/23/15.

JD North Fishway has been in service since 12/23; 5 out of 6 AWS pumps are available. Repair work on pump 4 continues; pump 3 has vibration issues and should be the last in service.

JD South Fishway RTS was on 2/28/15. All 3 AWS pumps in service and are working properly.

**Maintenance:**

JD North AWS pumps - five out of total six are available. Repair of AWS pump # 4 by a contractor started on 1/26 & is ongoing.

MU 9 OOS for 5 -year overhaul on 3/17. Scroll case inspected on 3/18, no fish found. **Draft tube very slow to drain/ exceeded 4 day FPP limit. See MFR.**

Calibration: 3/14/2015 All sensors were within the criteria of 0.3'.

**Research:**

2015 Adult Fish Counting by Normandeau Associates will commence on 1 April, 2015. Security and safety coordination underway.

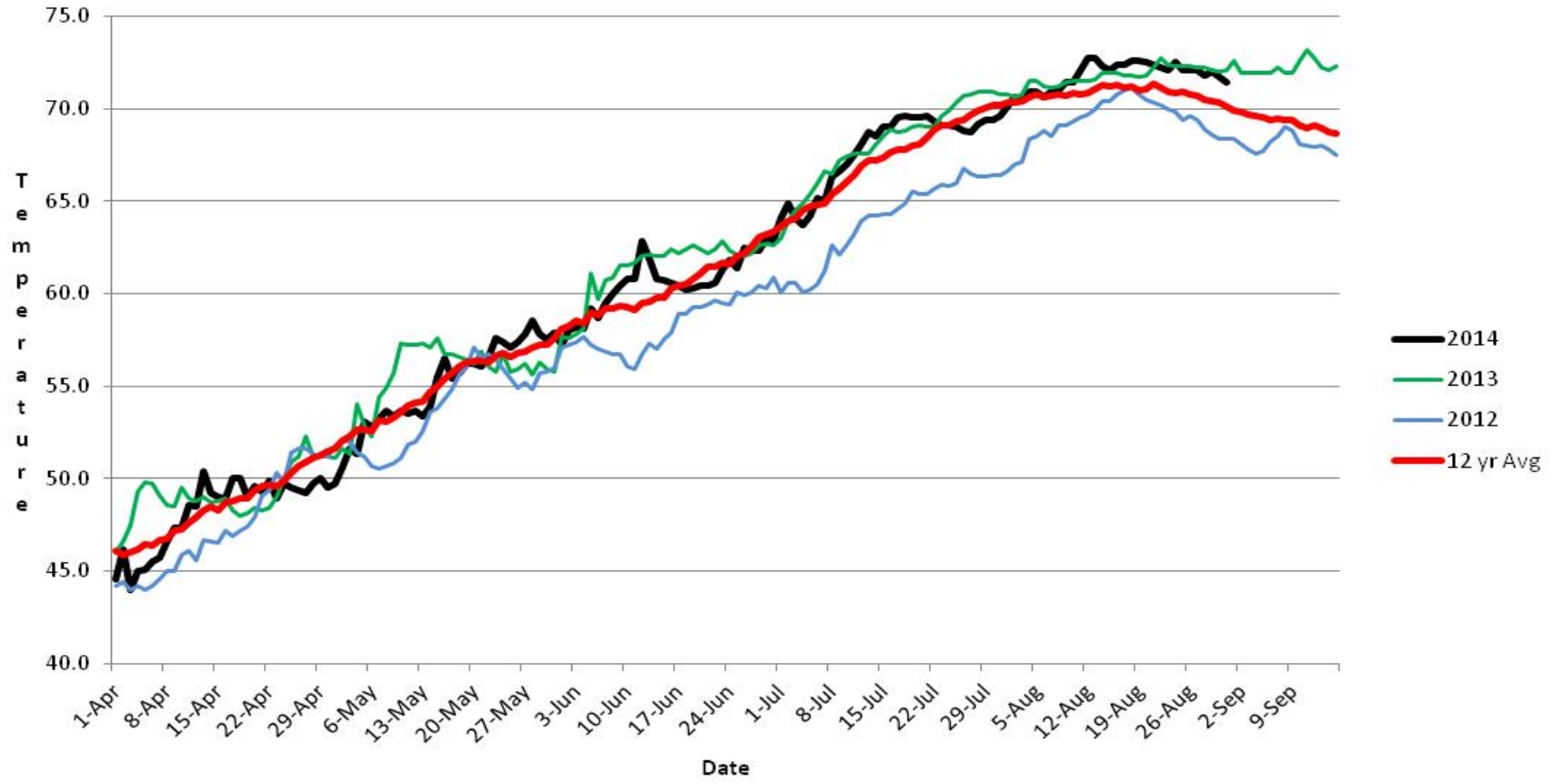
Adult Salmonids Radio telemetry evaluations are ongoing at both JD adult fishway. University of Idaho crew is in charge of detecting of all adult salmonids, which were tagged and released at Bonneville Dam.

Kevin Moynahan

Date:\_\_\_ 30-Mar-15

OPM John Day/Willow Creek Project

### JDA SMF Water Temp



## JDA Collection Channel Velocity

<b>Date</b>	<i>3-Mar-15</i>
<b>By:</b>	<i>ML/PR</i>

<b>Bay(s)</b>	<b>Time</b>	<b>Sec.</b>	<b>Velocity (f/s)</b>
<i>0-2</i>	<i>1:16</i>	<i>76</i>	<i>2.37</i>
<i>2 - 4</i>	<i>2:15</i>	<i>135</i>	<i>3.05</i>
<i>4 - 6</i>	<i>3:14</i>	<i>194</i>	<i>3.05</i>
<i>6 - 8</i>	<i>4:12</i>	<i>252</i>	<i>3.10</i>
<i>8 - 10</i>	<i>5:12</i>	<i>312</i>	<i>3.00</i>
<i>10 - 12</i>	<i>6:07</i>	<i>367</i>	<i>3.27</i>
<i>12 - 14</i>	<i>7:06</i>	<i>426</i>	<i>3.05</i>
<i>14 - 16</i>	<i>8:00</i>	<i>480</i>	<i>3.33</i>
<i>16 - 18</i>	<i>8:40</i>	<i>520</i>	<i>4.50</i>
			<b>3.19</b>

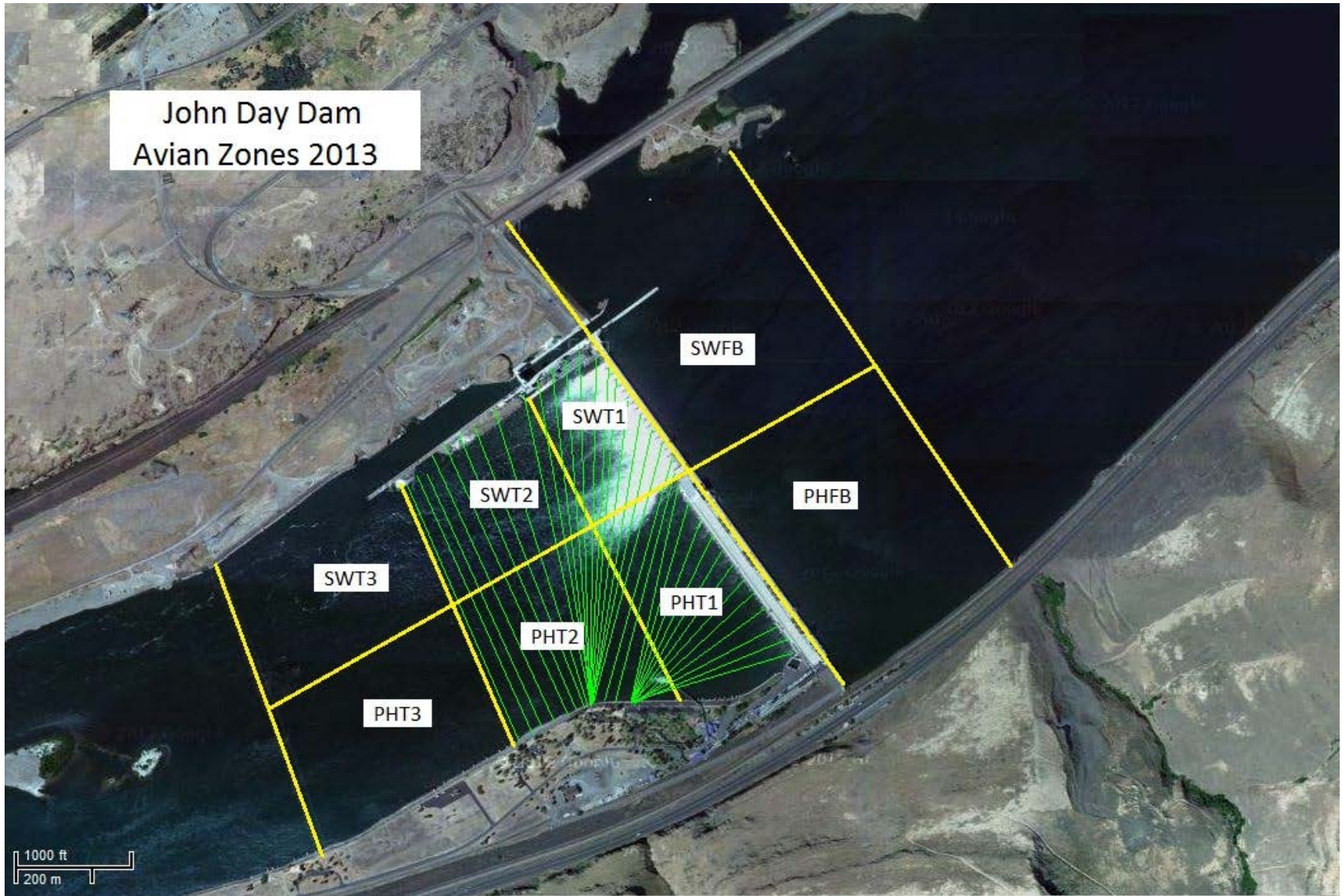
## 2015 JDA Piscivorous Bird Counts

F=foraging, NF=non-foraging

### Avian Bird Counts for the Week of March 15th - March 21st

	Gull		Cormorant		Caspian tern		Pelican		Grebe		Total
	F	NF	F	NF	F	NF	F	NF	F	NF	
PHFB	0	0	2	83	0	0	0	0	3	4	92
SWFB	0	10	0	1	0	0	0	0	0	0	11
PH1	0	0	5	1	0	0	0	0	0	0	6
PH2	0	0	0	0	0	0	0	0	0	0	0
PH3	0	0	0	0	0	0	0	0	0	0	0
SW1	0	0	3	1	0	0	0	0	0	0	4
SW2	0	0	3	58	0	0	0	0	0	0	61
SW3	0	1	0	0	0	0	0	0	0	0	1
<b>Total</b>	<b>0</b>	<b>11</b>	<b>13</b>	<b>144</b>	<b>0</b>	<b>0</b>	<b>0</b>	<b>0</b>	<b>3</b>	<b>4</b>	<b>175</b>

John Day Dam  
Avian Zones 2013



**John Day:**

	Temp:	Secchi:	Fallbacks
Sun	44	6.0	
Mon	44	6.0	
Tues	45	6.0	
Wed	44	6.0	
Thur	45	6.0	
Fri	46	6.0	
Sat	46	6.0	
AVG:	<b>45</b>	AVG: <b>6.0</b>	AVG <b>#DIV/0!</b>
			MAX <b>#DIV/0!</b>
			MIN <b>#DIV/0!</b>

	NE1	NE2	S.Ent	SE1	N.Ent	JBS Diff	Bay19
Sun	<b>7.8</b>	8.0	1.2	8.7	1.6	oos	1.5
Sun	<b>7.7</b>	8.0	1.3	9.3	1.4	oos	1.6
Mon	8.9	9.1	1.4	8.5	1.5	oos	1.7
Mon	8.1	8.0	1.6	4.6	1.6	oos	1.7
Tues	8.7	8.5	1.4	8.6	1.5	oos	1.6
Tues	8.7	8.6	1.5	9.0	1.5	oos	1.7
Wed	8.7	8.8	1.5	9.3	1.4	oos	1.5
Wed	8.4	8.6	1.5	8.6	1.5	oos	1.5
Thur	8.3	8.2	1.4	8.7	1.4	oos	1.7
Thur	8.9	8.8	1.5	8.1	1.5	oos	1.6
Fri	9.3	9.2	1.3	9.0	1.5	oos	1.6
Fri	8.0	8.0	1.6	8.0	1.6	oos	1.7
Sat	8.0	8.0	1.6	8.1	1.6	oos	1.6
Sat	8.6	8.6	1.5	8.8	1.5	oos	1.5
AVG:	<b>8.4</b>	<b>8.5</b>	<b>1.5</b>	<b>8.4</b>	<b>1.5</b>	<b>#DIV/0!</b>	<b>1.6</b>